

Supply Chain Risk Management

Our professional education course focused on effective ways to identify, mitigate and measure the impact of potential supply chain disruptions.

INFO SESSION

Thursday, Sept 26, 2024 | 12-1pm ET

Thank you for joining us!



Featuring our Instructors
Richard Sharpe



Tami Kitajima



and Host
Chris Gaffney

About the Course
scl.gatech.edu/scrm



Supply Chain and
Logistics Institute

Supply Chain and Logistics Institute

An Interdisciplinary Research Center, representing over 100 faculty, providing global leadership for research and education in the application of scientific principles to optimize the design and integration of supply chain strategy, infrastructure, processes, and technology.



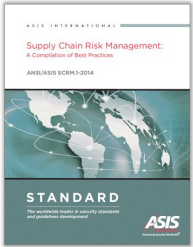
- Addressing societal needs through collaborative research and operations improvement projects
- Decades of extensive large-scale supply chain research through projects with dozens of companies: BCO's, carriers, manufacturers, retailers, eCommerce players, Marine Corps Logistics Command...
- Life-long learning: Summer Camps, Degree Programs, Professional Education, Juvenile Justice/URM/GED programs, High School Curriculum
- Global Reach and Partnerships



ENSURING
cross-functional
confidence in the data

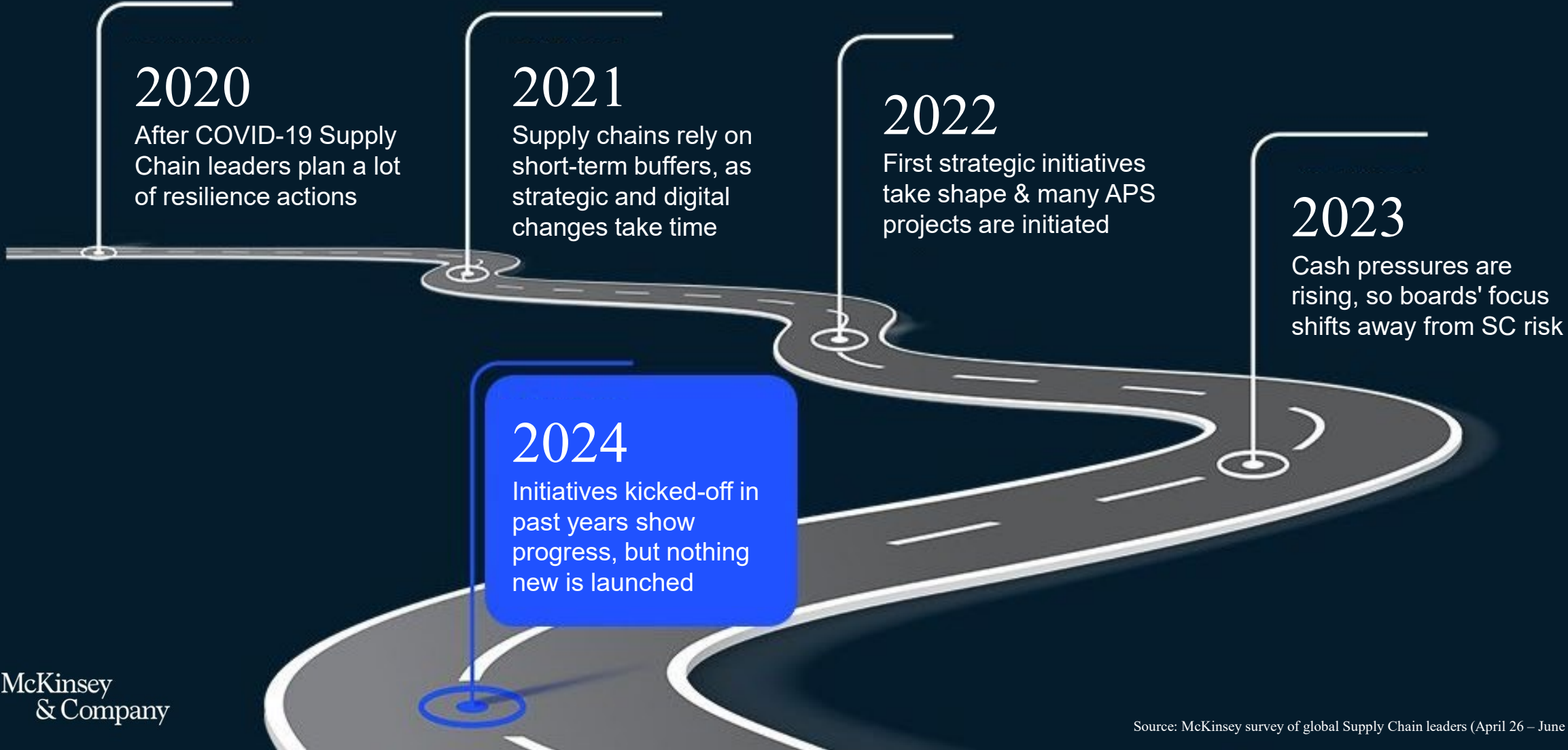
PINPOINTING
insights for specific
Cost and Profit Initiatives

Gartner 2014 Representative Vendor in Gartner's 2016, 2017, 2018 and 2022 Market Guide for
Cool Vendor **Supply Chain Cost-to-Serve Analytics Technology**



Over 20 years
experience in Supply Chain
Risk Management (SCRM)

Our survey of global Supply Chain leaders shows visible yet stagnating progress on SC resilience, and a false confidence in the new normal



Our survey of global Supply Chain leaders shows visible yet stagnating progress on SC resilience, and a false confidence in the new normal



Dual-sourcing and regionalization are ongoing efforts for 60% - 73% of companies, with continuous progress

Inventory buffers as short-term fix are decreasing for the first time since 2020

Tier-1 supplier visibility has grown by 10pp. Since 2023

APS implementations as a main drive of SC digitization are ongoing for 67%

76% of companies have sufficient **risk capabilities in-house and a (de-)central organization structure focused on it**



Risk identification

Tier-2 supplier visibility and beyond is deteriorating by -7 pp. since 2023

Only 33% invest in early warning systems, requiring real-time integration of internal & external data

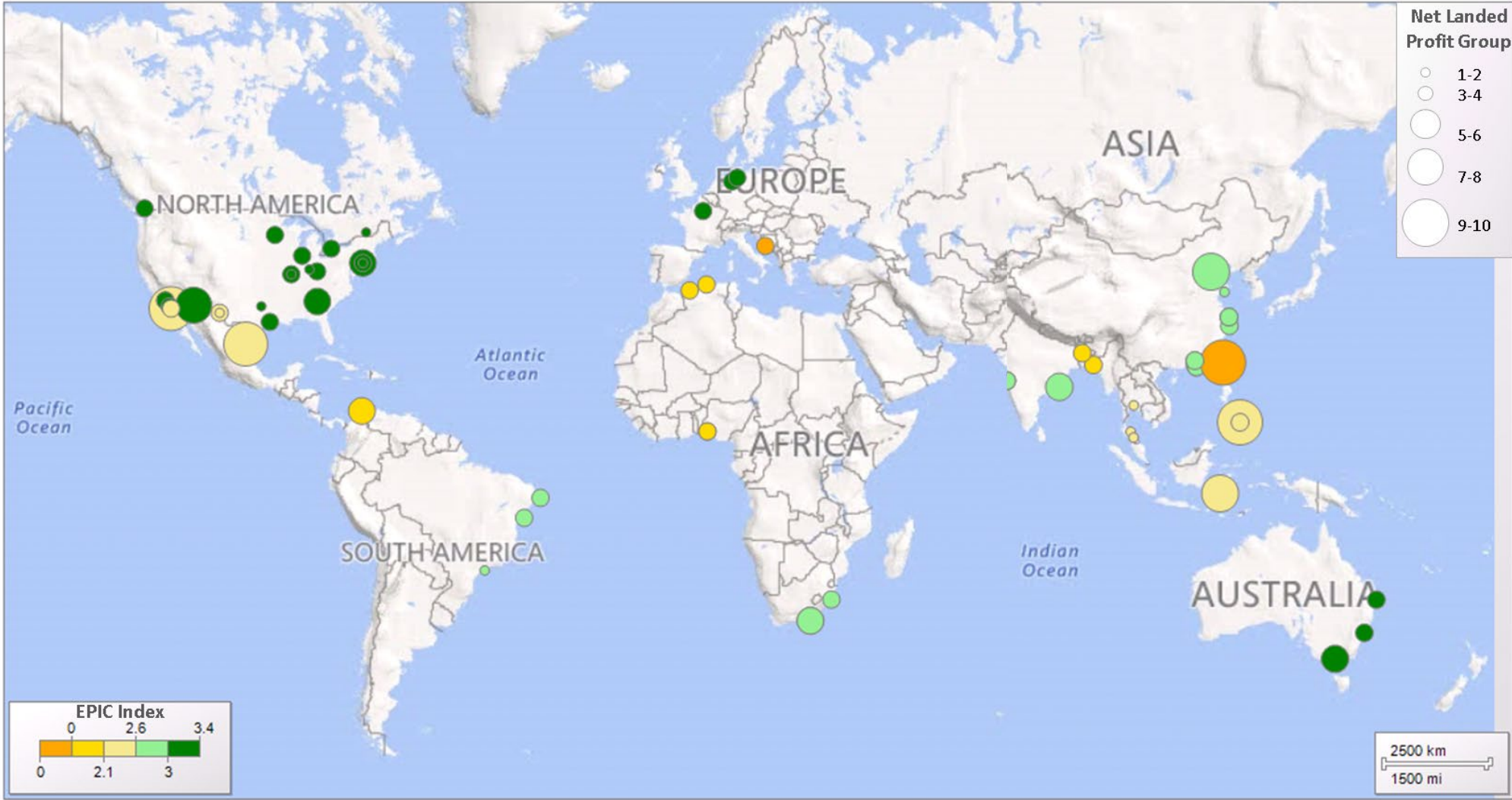
Risk mitigation

Only 48% upgrade their E2E planning to model risk scenarios, while 74% focus on **demand planning algorithms**

A response to a new disruption takes ~2 weeks, more than 1 S&OE cycle

90% lack sufficient **digital talent in-house** to leverage tech & data for SC risk

Measuring Supplier Risk Based on Profitability



Collaboration



ARTIFICIAL INTELLIGENCE IN MANUFACTURING

GEORGIA AIM

innovate.
collaborate.
educate.
participate.

**Artificial Intelligence/
Machine Learning
to enhance
Supply Chain Resilience
and Effectiveness**



GT | Supply Chain and Logistics Institute



Georgia AI Manufacturing (AIM) Grant



Competitive **insights**

Supply Chain Risk Management

PROACTIVE – before disruption

Mitigation • Preparedness

minimize impact of any kind of disruption



REACTIVE – after supply chain disruption

Response • Recovery

crisis management to defuse impact

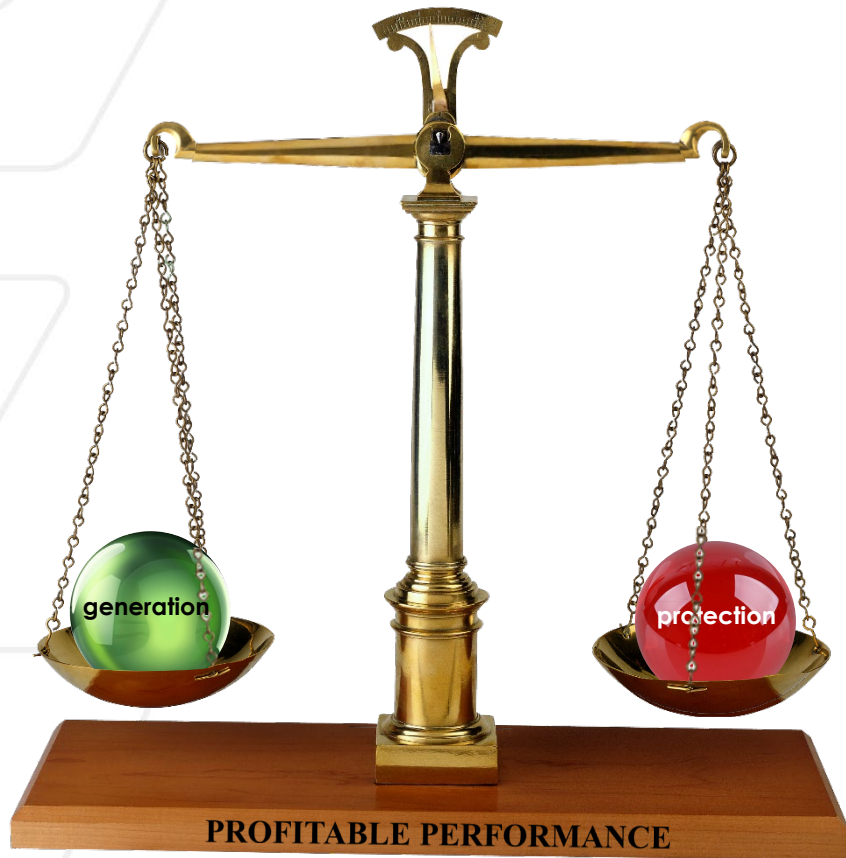


Supply Chain Risk Management Course



- Develop a broader, more comprehensive understanding of how your company's supply chain may be at risk.
- More effectively communicate to your company's stakeholders the realities of supply chain risks.
- Build a cross-functional understanding of the building blocks for an effective supply chain risk management to be used in your business.
- Improve your company's supply chain risk mitigation program.

Supply Chain Risk Management



protection of profit



- empowers cross-functional alignment that protects significant financial improvements
- accurately represent a holistic model of the operation
- link strategic and operational planning with financial planning

Supply Chain Risk Management

Our professional education course focused on effective ways to identify, mitigate and measure the impact of potential supply chain disruptions.

Upcoming Offering

October 17-18, 2024

Virtual (Instructor-led)

About the Course
scl.gatech.edu/scrm

Questions
course@scl.gatech.edu



Supply Chain and
Logistics Institute